

# West LA Connections

West Los Angeles United Methodist Church Monthly Newsletter | SEPTEMBER 2024 ISSUE

# SEPT. 2024



West Los Angeles United Methodist Church  
1913 Purdue Ave., Los Angeles, CA 90025

CHANGE SERVICE REQUESTED

Non-Profit Organization  
**U.S. POSTAGE  
PAID**  
Los Angeles, CA  
Permit No. 27833

## Growing More Christlike Together

West LA UMC welcomes all persons  
regardless of sexual orientation or gender identity.

# September 2024 Pastor's Reflection

At the moment of writing this Pastor's Reflection, I am on my first full day of a week-long vacation. This was an important vacation for both Viki and I, as we really wanted to spend some time with our parents; my mother Sueko who is 93 years old and Viki's parents who are both in their 80's. At their ages, we treasure the fact that their health is relatively good and able to do a vacation with us and spend time together.

Pastor's don't have weekends off like most working persons and so breaking away to see family on weekends like most people have the opportunity to do is few and far between especially when distance makes it all the more difficult. So this vacation (a cruise) with our parents seemed like the perfect opportunity to be present with each other that wouldn't involve a lot of moving from place to place; important for all of us seniors (a kind of slow-paced lounging around kind of vacation to read, relax, talk, eat and take naps!)

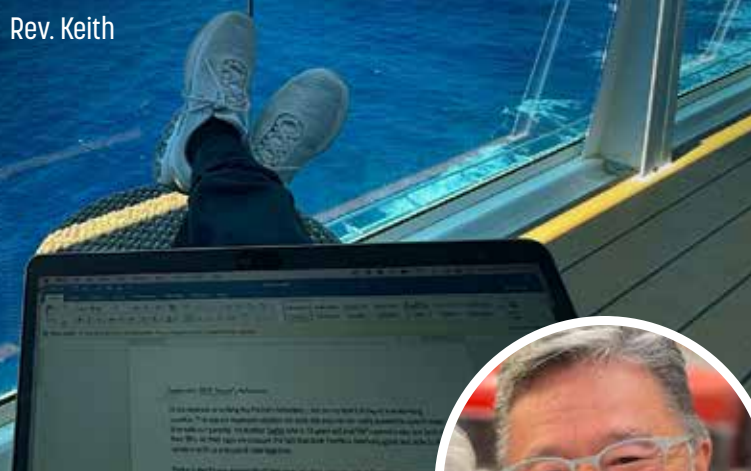
This photo is of me (sadly working) BUT, quite honestly, in the most idyllic setting! The vastness and beauty of the Pacific Ocean is before me as I reflect on life in this moment. I am reminded that it is in retreat and in moments of solitude that I am most refueled and reenergized in spirit and consciousness of my place in the world.

Rest and renewal in this way feels like a much needed retreat from

the routine of life; giving me opportunity to really listen to my own inner thoughts, reflect on life and to really hear and listen for God. I am remembering in this moment that it was on a much needed personal spiritual retreat that the following poem was written. I share it once again with you as I did in my sermon dated August 11, 2024 at WLAUMC. My prayer for all of you is that you are also able to have necessary and important opportunities for retreat for self-reflection; moments when you may come more conscious of your place in the wider expanse of God.

Grace and peace,

Rev. Keith



Rev. Keith Inouye

## The Journey of Life

We are all called to engage in the journey  
but I alone travel this one that was meant for me  
from birth to death  
I am blessed that others have traveled beside me for a while;  
some for simple and brief moments  
and others as partners on the journey through many years.  
It is the encounters along the way; both good and trying,  
and the people whom I have been blessed to know  
that have shaped who I was, who I am, and who I am still becoming.  
At journey's end,  
I hope that I am content with the life I have lived,  
the purposes to which I have set my eyes, my hands, my heart  
that it was a worthy and honorable endeavor  
grounded in a larger plan for living  
motivated and guided by that which is greater than I  
It is said in our Judaic-Christian faith  
that the two great commandments  
are to love God and neighbor as ourselves.  
May these be readily seen  
as the unwavering measure of my life.  
I humbly acknowledge my shortcomings and failings

And I ask for forgiveness  
I pray that in the end the good I have done  
might far outweigh the harm I may have caused.  
In the great mystery of where I came from,  
I have trust that in the end, I will return to the source of life  
from which all things come, the Eternal and Holy One  
who is known by many names  
through many cultures and religions.  
It is God's peace from which I have come,  
in God's peace I have endeavored to walk  
and it is into God's peace my hope does trust.  
Thanks be for the the life I have been given. I am grateful!

by Keith Paul Inouye

written September 21, 2016  
at Villa Maria Del Mar Catholic Retreat Center,  
Santa Cruz, CA

「敬老の日」

今年も私の大好きな敬老の日がやってきました。敬老の日は特別です。日本語部礼拝では、シニアの皆様に感謝をし、特別プログラムを準備したいと思えます。

また、CafeAlohaシニアミニストリーでは、対面式の集會を持ち、来られない方には弁当を届けます。愛するシニアメンバーに喜びと感謝の気持ちをもって敬老の月をお祝いしましょう。

もうかれこれ50年以上、南加連合では、毎月欠かさず、さくらガーデンナーシングケアホームと Keiai ロサンゼルスヘルスケアセンターで日本語礼拝を行っています。Keiai LA では引き続き2回礼拝が持たれ、今年から、さくらガーデンでは3回礼拝になりました。新しい棟が併設され、入居者が以前より増えているからです。靈的な健康を守り、生と死を理解する時を持ち、心に平安を与える礼拝は大事です。私たちは、皆、天国に行く準備をし、靈的に励まされ満たされたいと思っています。

「胎内にいる時からになわれており、生まれる前から運ばれた者よ。あなたがたが年をとっても、わたしは同じようにする。あなたがたが、しらがになっても、わたしは背負う。わたしはそうしてきたのだ。なお、わたしは運ぼう。わたしは背負って、救い出そう。」イザヤ46:3-4

年をとったら、主に背負ってもらい、主に守られることを信仰により覚えましょう。敬老の日おめでとうございます！

September is my favorite month, because we get to celebrate "Keiro-no-hi" together, just as what I used to do in Japan. On September 14th,

9月7日(土)11時よりCafeAlohaシニアミニストリー&敬老の日弁当  
教会では敬老の日を感謝してシニアの集會をします。参加できない方には、お弁当を届けます。ご希望の方はサインアップ、又は教会オフィスまでご連絡ください。

**Café Aloha Senior Program & Bento delivery on Saturday September 7 at 11 am:**

To celebrate Keiro-no-Hi, Café Aloha ministry would like to reach out to seniors 70 and older. We will meet at Church Fellowship Hall for lunch, music and Bible story. Also, we can deliver Bento to those who cannot participate. If you are interested, please sign-up or contact Church office. 70 and older by delivering Makunouchi bento. If you are interested in receiving bento, please contact Church office.

メニュー：塩麴鮭、稲庭うどん、菓子、フルーツ  
Menu: Shiokoji-Shake, Inaniwa-udon, Kashi, Fruits

Nichigo ministry will have a special program for our Ji-chan & Ba-chan. Also, on September 7th, we will prepare for an in-person Café Aloha Keiro no hi lunch!

For more than 50 years, Southern California Nichigo Church Federation has been leading Nihongo worship service at Sakura Garden Nursing Care facility and Keiai Los Angeles Healthcare Center. Nichigo Pastors from Southern California Churches take turns to provide a monthly worship service in Japanese. At Keiai, we continue to hold Nihongo reihai twice; once at a regular facility, once at an Alzheimer/Dementia facility. At Sakura Garden, starting this year, we have Nihongo reihai three times, since the facility has grown.

Worshipping God is very important because it nourishes our spiritual health, provides time to understand life and death, and gives us peace. It gives spiritual encouragement and the great hope in eternal life in Jesus.

"Listen to me, O house of Jacob, all the remnant of the house of Israel, who have been borne by me from your birth, carried from the womb; even to your old age I am he, even when you turn gray I will carry you. I have made, and I will bear; I will carry and will save." (Isaiah 46:3-4)

Our God is carrying us till the end! Keiro-no-hi Omedetoo-Gozaimasu!



Rev. Rebecca Hirata



**CHOIR DIRECTOR WANTED**

The SPRC Committee continues its search for our Choir Director and have re-submitted our job posting on the Cal Pac Conference job posting site as well as other organization job sites. Please contact Rev. Keith Inouye or Sonia Dixon if you know someone who might be interested in joining our WLA UMC staff! Search the link at Jobs - Listing (calpacumc.org).

# We had 5 amazing weeks of this year's Kids Camp (VBS)!

An amazing staff of volunteers, ready to get their feet wet, all played a part to help campers "dive into an undersea ocean theme adventure! This year we were blessed to welcome 9 new first-time staff to the SCUBA squad and 1 new Youth Assistant too!. The number of campers signed up also increased from 15 (last year) to 24 camper participants this summer!

The theme SCUBA was an acronym for S-Sharing! C-Community U-You. B-Belong. A-AMEN!

Yes! SCUBA was a time to meet and greet new friends and a time to explore what it means to dive into a friendship with God! Kids Camp was a time to learn about bible stories, engage in science experiments, make cool crafts, have fun making culinary creations, enjoy ocean themed snacks, eat lunch together and to sing songs. This year we added a tween component for the middle school age kids who may be beginning to feel too old for vacation bible school. For this age we added more challenging activities of woodworking, cooking and by planting beginning seeds of leadership by being a "big buddy" to a younger child. The buddies met over 2 lunch afternoons through the program. Big buddies assisted the younger campers get their lunch and engage in conversations together!



As the saying goes, it takes a village... and we had an amazing village to make Kids Camp happen this year!

Thank you to the staff (teachers, activity leaders and assistants) who customized a curriculum and added upon it to create fun and exciting projects, decorations that made the ocean and bible story theme come alive that even included a whale to be swallowed up in!

Thanks to the youth, who stepped out of comfort zones to step up into a leadership role, and for their care for the kids and support in any way needed. Thanks to the lunch team who prepared such delicious meals each Sunday for the everyone!

We thank the congregation for sharing the worship time to journey with us through our SCUBA bible stories.

## Director Team

Squiggly Squids Teacher  
 Ocean Explorers Teachers  
 Crafts Co-Coordinator  
 Culinary Creations  
 Cooking (Explorers)  
 Lunch Coordinator  
 Lunch Crew Members

## Missions Coordinator

Music  
 Photographer  
 Science Coordinator  
 Mid am Snack  
 Tween Woodworking  
 Worship  
 Worship Slide Show  
 Youth Assistants

Kristin Sakaguchi, Susanne Nagata, Viki Inouye

Susanne Nagata, (Eve Hirai-assistant)

Sharon Kinoshita-Gill, Mike Dote

Kathy Orebaugh, Lisa Tescum, Seidi Valencia

Giselle Narisawa, Jill Nishida

Viki Inouye, Ally Yamashita, Bennett Kim, Ashley Perez

Keiko Kikuta

Keiko Kikuta, Emily Cook, Janice Mayeda, Kenji Mayeda, Kristen Crabtree, Wayne Nomi, Grayson Izumi, Catherine Stanecki, Keiko Kano, Suzie Koo, Mui Koike, Keiko Kano, Lois Tateishi, Lisa Tescum, Elaine Sunno, Jean Shikata, Kay Yang, George Kikuta, Carol Nakano, Keiko Kuyama, Keiko Takahashi

Jeri Okamoto-Tanaka, Rachel Floyd, Steve. Hirai

Eve Hirai and youth

Diana Lock

Andre Laguerta, Danny Marchant

Mandi Sasaki, Gwen Nagata

Ryan Nagata, Bennett Kim, Keith Inouye

Rev. Keith Inouye

Eve Hirai

Jennifer Aoki, Jessica Aoki, Claire Izumi, Kalen Kim, Natalie Izumi, Jennifer Yamashita, Lauren Sasaki

# God's Garden Kicks-Off A New School Year!

Summer is now a memory, and a new school year is already here! Rally Sunday marks the kickoff of a new God's Garden year (Sunday School) and the staff is ready to put on their working gloves to do some gardening!

We are excited to be adding new staff to this year and welcome Kristen Crabtree and Katie Kuyuma to the Sacred Seeds Class and Alexander Martin and Ashlee Strunc to the Super Sprouts Class!

The Green House welcomes a rotating staff for the last Sunday of each month: The team is now expanded to include Danny Marchant, Ashley Perez, Andre Laguerta, Kristin Sakaguchi, and Lisa Tescum. We will rotate activities of crafts, culinary creations and science fun!

We are excited for new changes, beginning and growth in God's Garden, but it is not the staff alone that can contribute to growing seeds of faith and numbers in this ministry. We encourage you to invite your friends and relatives to not only special events and programs but to Sundays as well! It is shown that a personal invitation is the most successful way of bringing new people into the church.

## God's Garden: Planting SEEDS

(Spiritual Education, Enrichment and Discover classes)

**SEEDS** are optional classes offered after church. Topics and themes are lessons usually not offered in the Sunday morning curriculum. Lessons are often interactive, and activity based. Students earn a pin for their lanyard at the completion of the class. Coming Up:

September 15	Acolyte Class (10:45 am-11:30 am) (2nd grade+) Children will learn the symbolism and meaning of lighting the altar candles, practice lighting the candles and have an orientation to learn about other things they see in the sanctuary.
September 29	Communion Class (10:45 am-1:00 pm- lunch included) What is the meaning of communion and how did Jesus conduct the "Last Super" with his disciples? This class is the week before Worldwide Communion Sunday)
October 20	Meet Your Bible Class #1 (10:45 am-1:00 pm- lunch included) Orientation to what is in your bible and introduction on how to use it.
November 3	Meet Your Bible Class #2 (10:45 am-1:00 pm- lunch included) Orientation to what is in your bible and introduction on how to use it.



## Pen Friends!

West Los Angeles UMC is blessed to be a multi-generational church community. We value the friendships we have with one another but how many cross-generational relationships do the adults have with the children? "Pen Friends" is a fun way to bring two people together who otherwise may not have an opportunity to develop a friendship with one another.

Sign up, choose a pen name and complete a "get to know you form." An adult will be paired with a child. Both participants will not know the identity of each other, but only know the other by their "pen name" they create. Participants are asked to correspond with one another through letters, cards, and prayers. Younger children can have parents write what they want to say and can draw pictures for their pen friend! The Pen Friend program will begin in September and end at a Revealing Party on December 1st! For more details, please pick up a flyer and application on the information table!

# Summer Camp—A Life-Changing Experience

Jr. High Camp (middle school) Asian Camp (high school-college sophomores) is an opportunity for

youth from Northern and Southern CA, Washington and Colorado to gather for a week. We know camp as a sacred space, a time to explore faith without the distractions at home and a beloved community where one feels unconditionally loved, accepted and embraced. It is a summer home of wonderful fellowship, time to connect with God and just to have plain old fun!

We thank the wonderful leadership of camp that makes it happen! For the amazing commitment of Directors that create a theme that is scripturally grounded, meaningful and relatable to the youth; and for teaching and guiding and training a staff of counselors to grow in ownership of the lessons, for Counselors that lead and facilitate the understanding of the theme to their campers and for their leadership in other programming during the week; Clergy that bring the morning message in worship each day and for their available presence for those who have questions about faith or in need of pastoral counseling: Adult Staff who are present for supervision and to jump in for any behind the scene needs.

This week we had 5 JHC participants from West Los Angeles UMC! Camper: Sam Cullinan, First Time Counselors: Jenny Aoki, Adam

and Bennett Kim, Rev. Keith & Viki Inouye. Asian Camp participants included Campers: Jenny Aoki and Bennet Kim, Rev. Keith and Viki Inouye.

Asian Camp celebrated 50 years of youth camping ministry this year! Please tune into the Summer Camp Reflection service on YouTube (August 18) to hear more! To hear more about the theme for each camp and reflections from West LA participants!



## Asian Camp Celebrate 50 Years!

Asian Camp alumni, family and friends are welcome to join the AC 50th Anniversary Celebration and Reunion to be held at the Quiet Cannon Conference Center (Montebello) on October 12th.

We hope this to be a wonderful reconnection of friendships, reflection of great memories; the celebration of a transforming ministry for our youth and with humble gratitude to God for the constant guidance, and blessing over 50 years and counting....

Make your reservation today!

RSVP via: [withjoy.com/asiancamp](http://withjoy.com/asiancamp) or scan QR code!

See who's going! [Njaumccamps.org](http://Njaumccamps.org) (menu: 50)



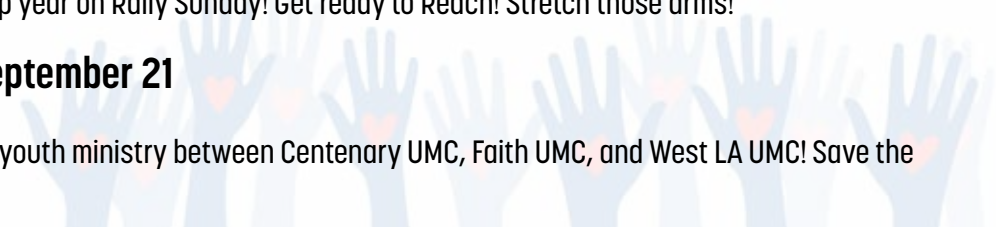
## Youth Ministry is Ready to Reach!

We are excited to begin a youth year to **Reach In** (learn and discover more about ourselves) **Reach Out** (finding opportunities to share our faith in action through service and giving) and **Reach Up** to seek and grow in our relationship to God!

Wake up and let's kick off a new youth group year on Rally Sunday! Get ready to Reach! Stretch those arms!

### LINX-Save the Date! Saturday, September 21

LINX will kick off its 3rd year of cooperative youth ministry between Centenary UMC, Faith UMC, and West LA UMC! Save the date! More details forthcoming!



# Claremont School of Theology

On Sunday, September 15th, retired Bishop Grant Hagiya – now serving as President of the Claremont School of Theology (CST) -- will join our 9:30 am worship service to receive a major gift donation from West LA UMC for the Bishop Roy I. Sano and Kathleen A. Thomas-Sano Chair in Pacific Asian American Theology at CST. This is the first endowed chair of its kind.

As CST explains: "By intentionally recognizing the continued contributions of Pacific and Asian American theologians through an endowed chair, CST honors the couple's legacy and advances this field of study in new ways, attracting religion leaders and budding scholars to the school. Bishop Sano . . . made history in 1984 when he was elected as United Methodism's first Japanese American bishop. Throughout his tenure, he organized and advocated for the rights of marginalized communities and for the full participation of all people in the life of The United Methodist Church. Mrs. Thomas-Sano was passionate about justice, serving as a consultant on racism, multiculturalism, inclusiveness, cross-cultural ministries, mediation, and diversity." Bishop Sano also mentored and taught several Japanese American United Methodist pastors, including some serving West LA.

The \$100,000 donation from West LA UMC is made possible by the generosity of Issei and Nisei donors and the prudent investment stewardship of these funds over the years. Most of the funds will come from the Akio and Hazel Ujihara Memorial Fund, which was established in 2006 and increased substantially in value, together with returns from recent generous bequests from Frank & Ihoko Fukuhara, Jimmy Fukuhara, Joe Shikami, and Miyoko Shimahara.

Since its founding in 1930 by Japanese immigrants, the West LA church community has consistently invested in a vision for future generations to grow in their faith and relationship with God, while also uplifting those in need and preserving the heart and spirit of the Japanese American experience. We are grateful to these generous donors and models of giving for enabling their West LA UMC congregation to support the Sano Chair, Pacific and Asian American theologians and scholarship, and CST's ethos of compassion, justice, and belonging. By God's grace, may this legacy gift continue to bear fruit long into the future.

"Blessed are those who plant trees under whose shade they will never sit."  
– Ancient Proverb

For more information about the Claremont School of Theology (now housed at Westwood UMC), visit [www.cst.edu](http://www.cst.edu). Please contact the West LA UMC office for information about Planned Giving opportunities.



## VOLUNTEER CORNER

Embrace our call to serve! The Social and Environmental Justice and Missions Committee invites you to join community volunteer efforts, from food banks and cleanups to meal provision, deepening our connection with Christ and each other. Explore the list of opportunities below. Questions? Contact Mark Holmes at [mholmes64@yahoo.com](mailto:mholmes64@yahoo.com) or the organization directly.

**Kardia UMC VA Lunch Prep and Distribution:** Monthly sack lunches for veterans in West LA. Scan the QR code to join.



**Ballona Creek Wetland Clean-Up:** Enhance wetlands habitats; details at [ballonafriends.org/volunteer](http://ballonafriends.org/volunteer).



**Volunteers Cleaning Communities:** Clean streets in Westside and South San Fernando Valley. Schedule at [volunteerscleaningcommunities.com/schedule-of-events](http://volunteerscleaningcommunities.com/schedule-of-events).



**PATH (People Assisting the Homeless):** Help move thousands to permanent housing. Opportunities at [path.org/volunteer](http://path.org/volunteer).



**Los Angeles Regional Food Bank:** Impact food insecurity by helping with food distribution. Register at [lafoodbank.org/volunteer](http://lafoodbank.org/volunteer).



Scan the QR code for direct access to each opportunity. Note, visit organization websites often as many dates are added closer to actual event date.

# Aki Matsuri Festival Postponed | By Stan Shimotsu

We are postponing this year's Aki Matsuri Festival previously planned for Saturday, September 21, 2024.

Our last Asian Cultural Festival was in 2019 due to the COVID Pandemic. Since January of this year, our Aki Matsuri Festival Planning Committee worked hard to prepare for an event which would showcase our community of faith with its unique historical and cultural identity and express who we are as a thriving and productive member of the United Methodist Church and West LA Community. During the planning process we learned that since 2019, the County Health Department has tightened its rules as to how community organizations are allowed to sell and serve food to guests at an event such as ours. We could not prepare food in our own kitchen nor could we bring food prepared in our homes with the exception of baked goods. Rules as to maintaining food temperatures, hot or cold, were revealed to be extremely stringent so we explored hiring food trucks to provide food and refreshments for our guests and members. Ultimately, as the timeline for completing all the necessary steps to achieve all that we needed to accomplish in our planning grew shorter, we came to the realization that the end product would not be an event that reflected who we are at WLAUMC and a festival of which we would be proud. Thus, the decision of the Planning Committee was to postpone the event for this year.

We learned much in the planning process which will be most useful in preparing for future events. My gratitude and thanks to our pastors and our entire Planning Committee for their consistent dedication and hard work.

Blessings,

Stan Shimotsu

Administrative Council Chair

And Aki Matsuri Planning Committee Member

## A Word of Plea and Encouragement | By Rev. Keith Inouye

Dear WLAUMC members and friends,

The deliberation that needed to take place regarding the status of our planned Aki Matsuri (formerly known as our "Asian Cultural Bazaar" event) and decision to cancel or postpone this most treasured and important of fundraising and community outreach was indeed a sad realization but one that we all felt was necessary as Chair Stan Shimotsu explained in his newsletter article. That said, we shall do our best to rethink and reimagine how we can address both of these important functions (community outreach AND fundraising) in the future.

In light of this decision however, I would like to make this plea and encouragement to all members and friends of WLAUMC that you please consider making special donations beyond your regular pledge giving to help our church meet our budgetary needs for the remainder of 2024 and to proactively address our needs for 2025.

It is through the combined generosity and giving of all of us that keeps our ministry sustained and on a growing edge. I thank God for the good place and condition of ministry that we currently have but I also know that there is much more that God is calling our ministry. Please consider what you can give through your monetary contributions, your time, and your wonderful talents! Thank you!

### 2024 Café Aloha Bento

#### Delivery Schedule

September – December, 2024



ALSO, In-Person at 11am at Church\* Saturday, September 7\*

Saturday, October 5

Saturday, November 2

ALSO, In-Person at 11am at Church\* Saturday, December 7\*

\*Sign up when you're at church, or call the office, if you'd like to join the In-Person lunch, in the Social Hall: 310-479-1379

Café Aloha will hold its second "In-Person" luncheon on September 7th in the church social hall starting at 11am.

You will experience an oishii (delicious) simple Japanese meal, a spiritual message by Rev. Becky, singing, reconnecting with people you haven't seen/ talked to in a while and even meeting someone new.

There is a "Sign-In" sheet on the bulletin board in the social hall. If you need transportation to the social hall, please call the church office and we will do our best to accommodate your request. We will be providing our usual delivery of bento's for those of you unable to attend.

We look forward to serving you!



## Next Thursday Breakfast Bunch gathering: September 5th!

Dear WLAUMC members and friends,

Come join us on Thursday September 5th for our monthly Thursday Breakfast Bunch gathering at 8am at Marie Callender's near the corner of Sawtelle and National (11324 National Blvd, Los Angeles, CA).

Please **RSVP to Rev. Keith by calling or texting him at (408) 355-0837** if you are a first-time attendee, so that he can make a name-tag for you prior to the breakfast. [To help everyone learn each other's names as much as possible—especially newcomers—to get to know each other! It's a part of our community building commitment.]

**Need a ride?** If you need help with transportation, please contact Rev. Keith so he can arrange transportation for you. Our breakfast gatherings are always great opportunities to catch up with one another and meet new friends! Please join us!



## Next WLAUMC Grief Support Group Meeting | Wednesday September 11 at 11:30am in the Learning Center

To those who are experiencing momentary or long-term grief and loss, please contact Rev. Keith to join our next session of Grief Support Group.

Grief and loss of many kinds confront us all at some point in our lives. Having a support network to express our feelings, find direction and purpose in the transitions and receive insights from others who have, or continue to journey through loss, can help us know that we are not alone. We find comfort, support, healing and encouragement in the context of community and God's grace and love.

If you are searching for a supportive community in the midst of a loss, please consider joining our monthly Grief Support group. We will meet on Sept. 11th at our usual time of 11:30am in the Learning Center. As always, Rev. Keith will provide lunch with hopes that participants can contribute a small donation to cover the cost of the lunch provided.

If you would like to join or if you have questions or concerns, please call or text Rev. Keith at (408) 355-0837. This will also help him provide the appropriate amount of food and to ensure that a name tag is made for you.

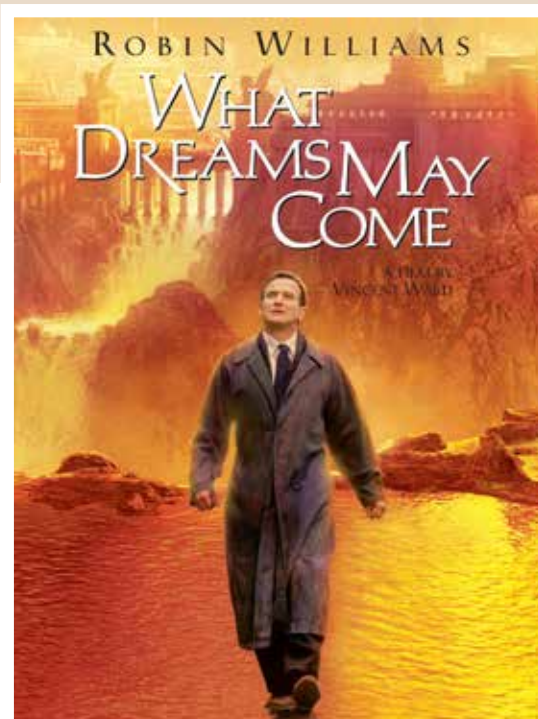


## "What Dreams May Come"

September 22 at 1pm in the Learning Center

Rev. Keith referenced this film in his August 4th sermon which perked the curiosity and interest of many of our "Faith at the Movies" attendees. The 1998 film is an adaptation of Richard Matheson's novel. The main character in the movie was played by the late comedian/actor Robin Williams. This was by no means a comedy but one of Robin Williams' most dramatic roles in a movie with a most deep and emotional theme. It will certainly spark much conversation on some deep emotional and theological topics such as death, suicide, the concepts of the afterlife and heaven and hell, love, and so much more.

Come join us for this very imaginative, artistic, and provocative film on Sunday September 22 at 1:00pm in the Learning Center! Popcorn and beverages provided!





## Celebrating Birth of Children! Welcome Kolby!

We celebrate the birth of Kolby James Mitsuji Tsukahira born on August 13th to parents Marc & Taryn Tsukahira (son and daughter-in-law of John & Susan Tsukahira).

May God bless their son and the family as he grows in his family's love.

## Supporting Backyard Birds | By Jamie Thierman

I recently read an article in The Week Junior about creating a safe habitat for wild birds near your home. They state that the North American bird population has decreased by nearly 30% over the last 50 years, due to habitat loss, pollution, and climate change. The good news is that there are small changes we can make on an individual level in order to support them:

- 1. Nesting Material.** In the spring, don't clear your outside area completely free of twigs, sticks, pine needles, and other natural elements. Birds need this material for nesting.
- 2. Shelter.** Make sure bird houses are made of wood. Plastic will get too hot for them. Place them in high areas sheltered from rain and out of reach of predators.
- 3. Insects.** Try not to use chemicals and insecticides on yards. I know this can be challenging in Los Angeles summers, but it's important to keep in mind. Birds rely on insects for survival and to feed their young.
- 4. Feeders.** If you have a bird feeder, make sure the seeds stay dry. Damp seeds, even from humidity, can turn moldy, and pass toxins on to the birds. Fill your feeder only about half full at a time, so the seeds are not sitting out for long.
- 5. Windows.** Birds see a reflection of sky or trees in windows which is why they crash into them. It's helpful to attach decals or screens to windows.
- 6. Water.** The article didn't mention this, but I would also add to keep a bird bath filled with water in your outdoor area if you are able. We have one in our yard and it is always filled with birds, especially in the hot summer days of Los Angeles.



### SUNDAY WORSHIP SERVICES

In-person Services  
9:30 AM—English Worship  
11:00 AM—Japanese Worship  
Online worship at [wlaumc.com](http://wlaumc.com)

### CHURCH OFFICE HOURS

**Monday-Thursday**  
8:30am-12:30 pm  
or call the Church Office at  
310-479-1379  
to speak to the staff

### STAFF

**Rev. Keith Inouye Senior Pastor**  
408-355-0837 cell  
[SeniorPastor@wlaumc.com](mailto:SeniorPastor@wlaumc.com)

**Rev. Rebecca Hirata**  
Japanese Language Pastor  
[Nichigo@wlaumc.com](mailto:Nichigo@wlaumc.com)

**Rev. Dr. Richard Kuyama**  
Pastor Emeritus  
[dryrkuyama@gmail.com](mailto:dryrkuyama@gmail.com)

**Viki Inouye**  
Director of Children, Youth,  
Young Families Ministries  
[Children-Youth@wlaumc.com](mailto:Children-Youth@wlaumc.com)  
408-355-0836

**Administrative Assistant**  
[info@wlaumc.com](mailto:info@wlaumc.com)  
310-479-1379